

Election Sign Policy

Under the authority of the Public Transportation and Highway Improvement Act the Ministry through the issuance of a permit controls all visible signing upon or within 400 metres of the provincial highway right-of-way.

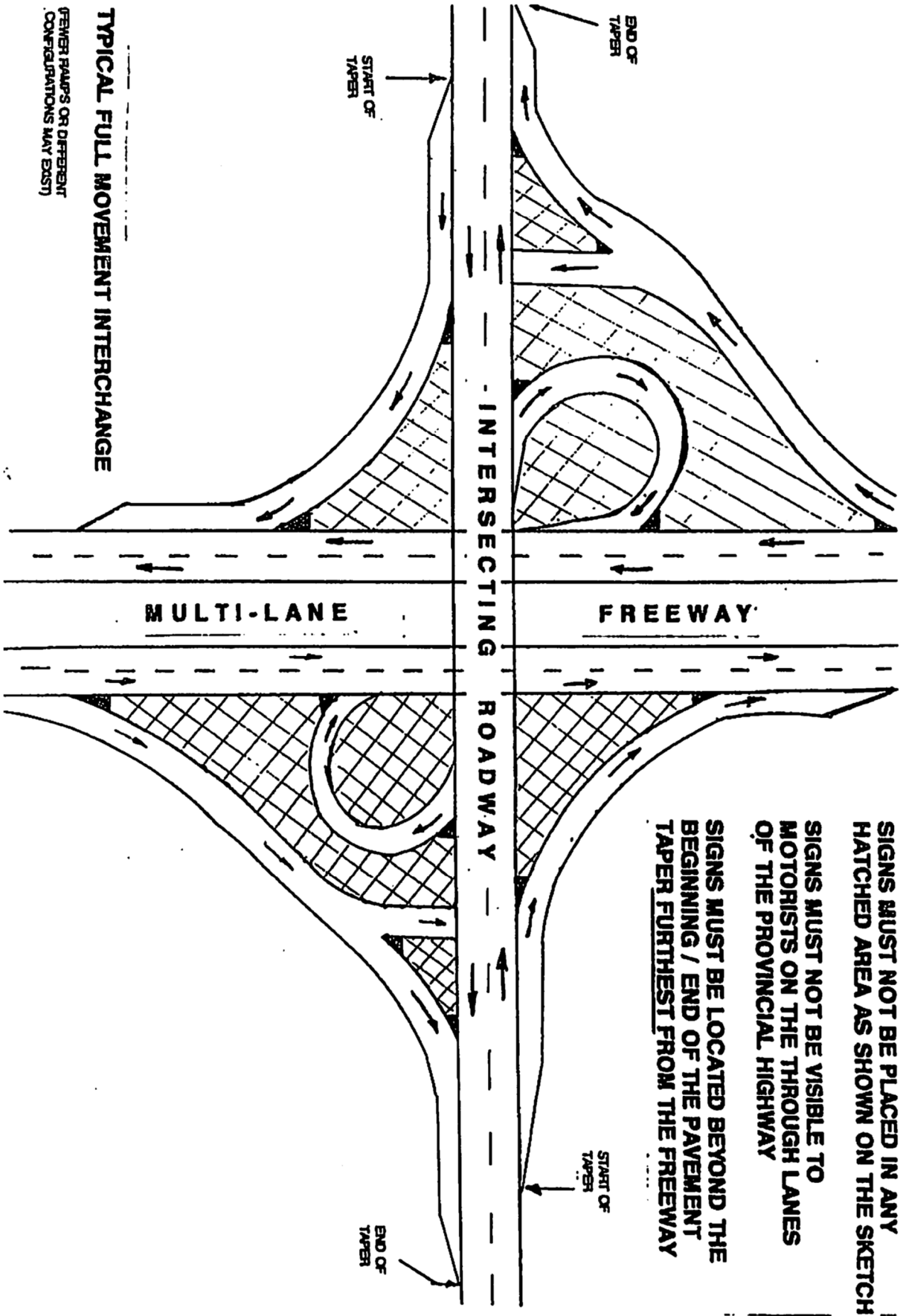
Election signs placed by, or on behalf of, a candidate or a political party and signs designed to encourage citizens to vote must follow these restrictions governing election signs that are visible from a provincial highway system.

1. An election sign **must not** be placed upon or adjacent to the right-of-way of a Class 1 - Freeway or a Class 2 - Staged Freeway (i.e. Hwy 401, 115, etc). See attached typical diagram for freeway/staged freeway interchange election sign placement.
2. Election signs may be erected on the right-of-way or adjacent to a Special Controlled Access, Major or Minor Highway (i.e. Hwy 7, Hwy 35) **after an official election has been issued** or for **municipal elections** in accordance with any By-Law outlining a time frame for the placement of municipal election campaign signs.
3. Signs up to 0.7 m² (8 sq. ft.) in size **must be** placed at least 4 m (12 ft.) from edge of pavement. Signs over 0.7 m² (8 sq. ft.) and up to 3.7 m² (40 sq. ft.) must be placed at the outer limit of the right-of-way (i.e. fence line). Election signs must not exceed 3.7 m² (40 sq. ft.).
4. An "election sign" **must not** be affixed to a permanent or an official sign or to guide rail or other highway structure or facility and **must not** be placed where it may interfere with visibility, an official sign, traffic signal, or other safety device.
5. Portable read-o-graph sign trailers **must not** be placed upon a provincial highway right-of-way. Portable read-o-graph sign trailers may be utilized providing they are erected on private property that is zoned commercial and meets all the requirements of the ministry for portable read-o-graph signing.
6. A Sign Permit or a Letter of Approval for any signs erected under these instructions is not required.
7. Election signs **must be** removed from the Ministry right-of-way and adjacent properties within three (3) working days after Election Day.
8. Signs not retrieved by this time will be picked up by the Ministry patrol forces and stored in a safe place (patrol yard, etc.,) for a period of two weeks. After this time they will be disposed of.

Please contact a Corridor Management Officer in your area, with the telephone numbers provided below, to obtain additional information. Thank you for your co-operation.

**Ministry of Transportation
Operational Services
Bancroft Area Office**
50 Monck Street
Bancroft, ON K0L 1C0
Tel. No.: (613) 332-3220
Toll Free: 1-800-554-0487
Fax No.: (613) 332-3751

**Ministry of Transportation
Operational Services
Port Hope Area Office**
138 Hope Street North
Port Hope ON L1A 2P1
Tel No.: (905) 885-6381
Toll Free: 1-866-224-0622
Fax No.: (905) 885-9273

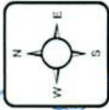


SIGNS MUST NOT BE PLACED IN ANY HATCHED AREA AS SHOWN ON THE SKETCH

SIGNS MUST NOT BE VISIBLE TO MOTORISTS ON THE THROUGH LANES OF THE PROVINCIAL HIGHWAY

SIGNS MUST BE LOCATED BEYOND THE BEGINNING / END OF THE PAVEMENT TAPER FURTHEST FROM THE FREEWAY

Ministry of Transportation - Eastern Ontario
Corridor Management - Areas of Responsibility



Head, Corridor Management
 Louis Tay - (613) 748-5280

Corridor Management Planners

- Mike Gibbs - Kingston Regional Office, (613) 545-4834
- Stacy Swezey - Kingston Regional Office, (613) 545-4665
- Cheryl Tolles - Kingston Regional Office, (613) 545-4744

Corridor Management Officers

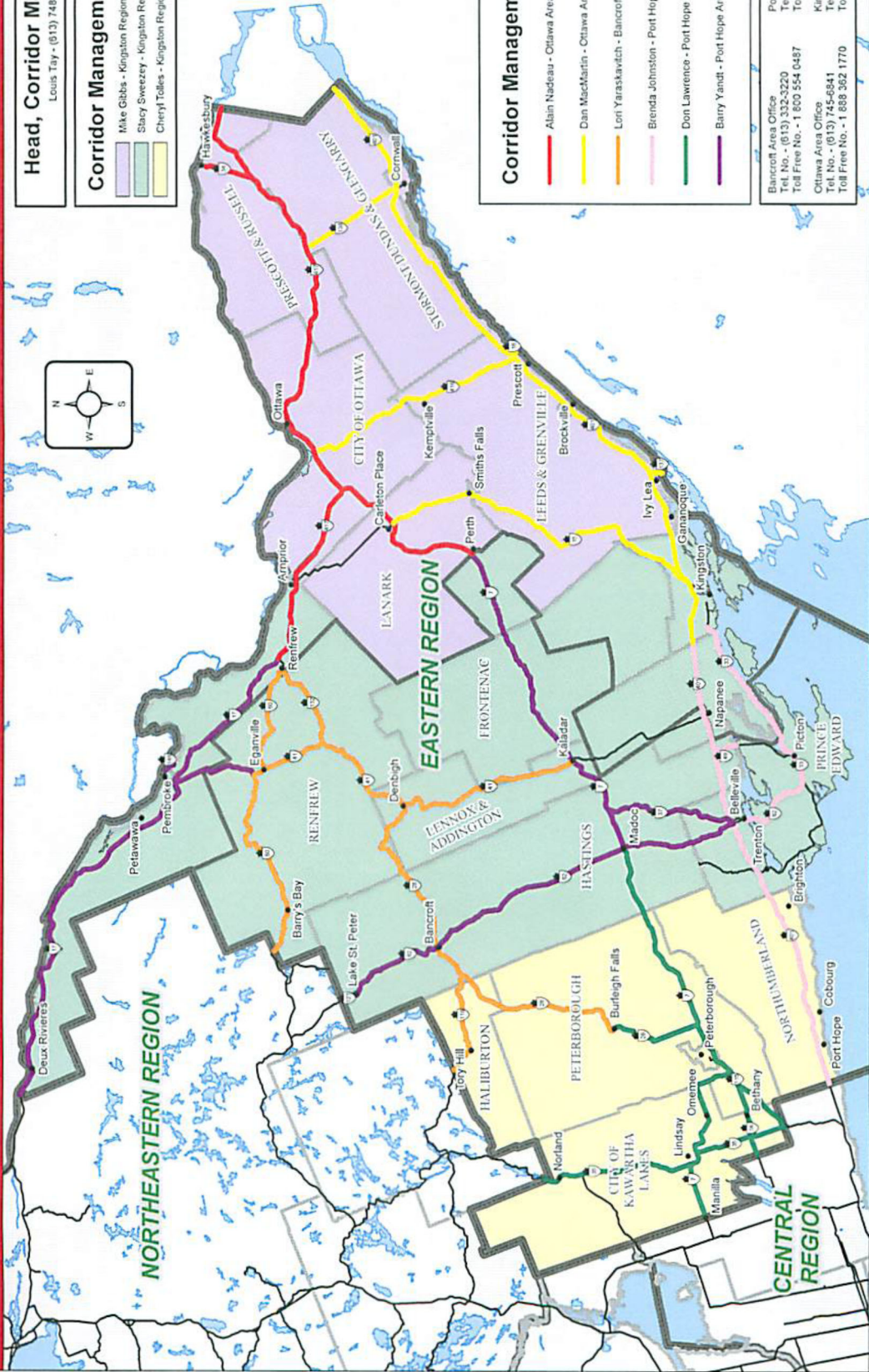
- Alain Nadreau - Ottawa Area Office, (613) 742-5322
- Dan MacMartin - Ottawa Area Office, (613) 742-5324
- Loni Yaraskawich - Bancroft Area Office, ext. 214
- Brenda Johnston - Port Hope Area Office, ext. 205
- Don Lawrence - Port Hope Area Office, ext. 208
- Barry Yandt - Port Hope Area Office, ext. 224

Bancroft Area Office
 Tel. No. - (613) 332-3220
 Toll Free No. - 1 800 554 0487

Ottawa Area Office
 Tel. No. - (613) 745-6841
 Toll Free No. - 1 888 382 1770

Port Hope Area Office
 Tel. No. - (905) 885-0381
 Toll Free No. - 1 866 224 0622

Kingston Regional Office
 Tel. No. - (613) 544-2220
 Toll Free No. - 1 800 287 0265



PREPARED BY EASTERN REGION GEOMATICS SECTION, SEPTEMBER 2013