

BEARING NOTES

BEARINGS ARE MTM GRID, DERIVED FROM CAN-NET REAL-TIME NETWORK  
GPS OBSERVATIONS AND ARE REFERRED TO THE CENTRAL MERIDIAN (76°30'  
WEST LONGITUDE) OF MTM ZONE 9 NAD83 (CSRS) (2010.0).

FOR BEARING COMPARISONS A ROTATION OF 00°15'25" COUNTER-CLOCKWISE  
WAS APPLIED TO PLANS D1, P1 AND P2 AND 00°16'30" COUNTER-CLOCKWISE WAS  
APPLIED TO PLAN (P3) TO CONVERT TO GRID BEARINGS.

LEGEND

■	DENOTES	FOUND SURVEY MONUMENT
□		PLANTED SURVEY MONUMENT
IB		IRON BAR
SIB		STANDARD IRON BAR
SSIB		SHORT STANDARD IRON BAR
IBØ		ROUND IRON BAR
(WIT)		WITNESS
ACC		ACCEPTED
MEAS.		MEASURED
(1476)		MONUMENT-URSO SURVEYING LTD.
(D1)		INST. RS209808
(P1)		PLAN 27R-197
(P2)		PLAN 27R-8699
(P3)		PLAN 27R-1678
S/T		SUBJECT-TO
C/L		CENTRELINE
CLF		CHAIN-LINK FENCE
BF		BOARD FENCE
—OH—		OVERHEAD WIRES

PLAN OF SURVEY OF  
**PART OF LOT 27**  
**CONCESSION 10**  
GEOGRAPHIC TOWNSHIP OF NORTH ELSLEY  
TOWN OF PERTH  
COUNTY OF LANARK  
MONUMENT-URSO SURVEYING LTD.

SCALE 1 : 500



METRIC  
DISTANCES SHOWN ON THIS PLAN ARE IN METRES AND CAN BE  
CONVERTED TO FEET BY DIVIDING BY 0.3048.

SURVEYOR'S CERTIFICATE

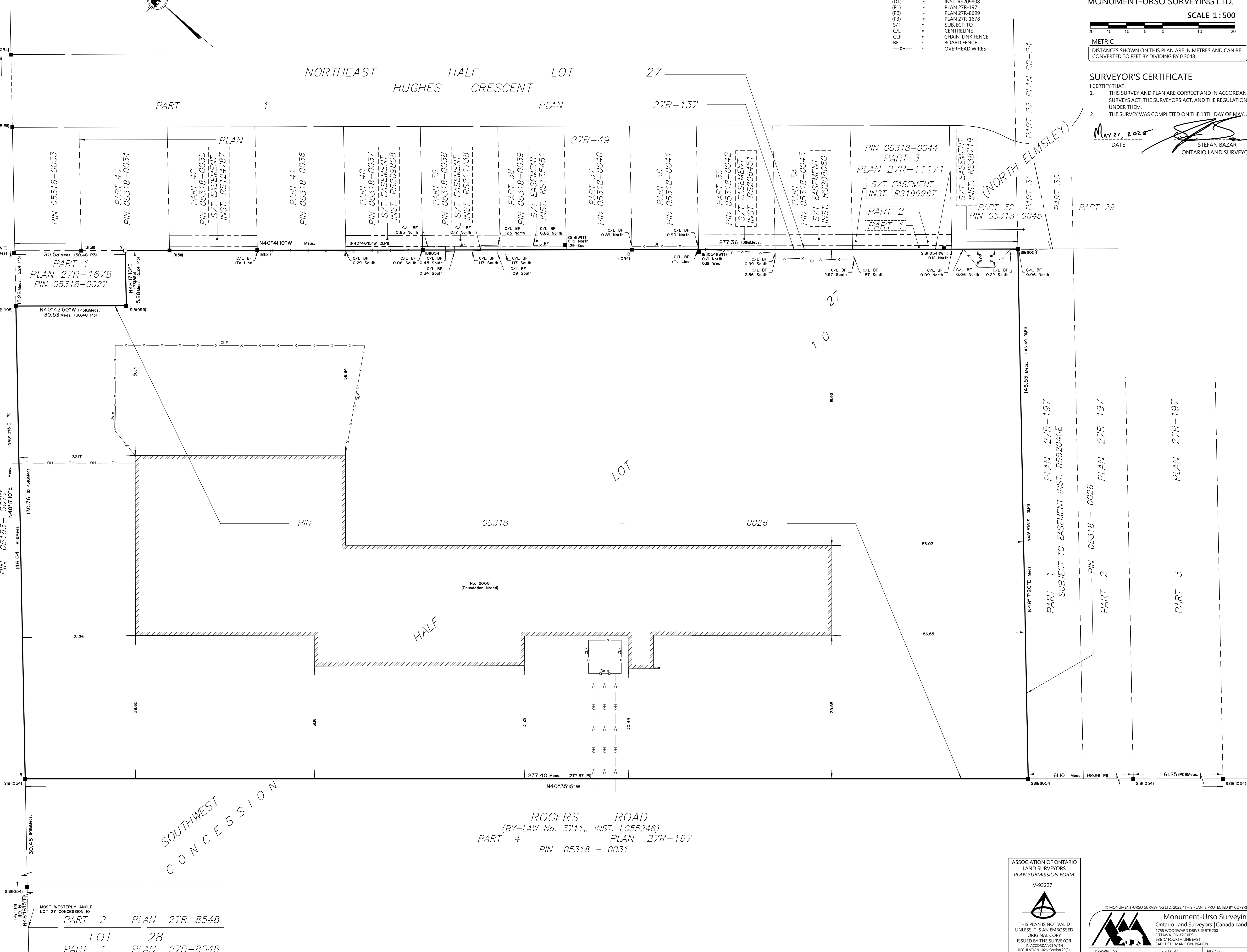
I CERTIFY THAT:

- THIS SURVEY AND PLAN ARE CORRECT AND IN ACCORDANCE WITH THE  
SURVEYS ACT, THE SURVEYORS ACT, AND THE REGULATIONS MADE  
UNDER THEM.
- THE SURVEY WAS COMPLETED ON THE 13TH DAY OF MAY, 2025.

May 21, 2025  
DATE

STEFAN BAZAR  
ONTARIO LAND SURVEYOR

ROAD ALLOWANCE BETWEEN THE TOWNSHIPS OF DRUMMOND AND NORTH ELSLEY  
Known as SOUTH STREET (SCOTCH LINE ROAD)



ASSOCIATION OF ONTARIO  
LAND SURVEYORS  
PLAN SUBMISSION FORM  
V-93227

THIS PLAN IS NOT VALID  
UNLESS IT IS AN EMBOSSED  
ORIGINAL COPY  
ISSUED BY THE SURVEYOR  
IN ACCORDANCE WITH  
REGULATION 1026, SECTION 29(3).

© MONUMENT-URSO SURVEYING LTD. 2025. "THIS PLAN IS PROTECTED BY COPYRIGHT"

Monument-Urso Surveying Ltd.  
Ontario Land Surveyors | Canada Land Surveyors  
1755 WOODWARD DRIVE, SUITE 200  
OTTAWA, ON K2C 0P9  
536 "C" SOUTH LINE EAST  
SAULT STE MARIE ONL P6A 6J8

TEL: (613) 800-1583  
TEL: (705) 254-7851  
FAX: (705) 254-5571

DRAWN: DG	FIELD: AC	FILE NO:
PROCESSED: SB	CHECKED: DC	25-0511 2020RogersRd F