

SCHEDULE			
PART	LOT	REGISTERED PLAN	P.I.N.
1	PART OF 15, 16 AND 17 (SOUTH SIDE BROCK STREET) AND PART OF IRWIN STREET (CLOSED BY BY-LAW LC53148)	No. 8828	PART OF 05180-0230(LT)

PLAN 27R-12279

Received and deposited

May 17<sup>th</sup>, 2024

Dragana Jovanovic

Representative for the  
Land Registrar for the  
Land Titles Division of  
Lanark (No.27)

PLAN OF SURVEY  
OF PART OF  
LOTS 15, 16 AND 17  
SOUTH SIDE BROCK STREET  
AND PART OF  
IRWIN STREET  
(CLOSED BY BY-LAW LC53148)  
REGISTERED PLAN No. 8828

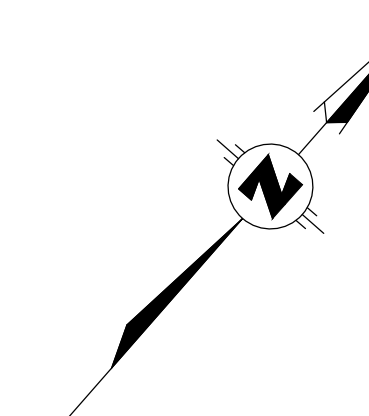
IN THE  
TOWN OF PERTH  
COUNTY OF LANARK

SCALE 1:400



(SCALE IN METRES)  
THE INTENDED PLOT SIZE OF THIS PLAN IS 610mm IN WIDTH  
BY 610mm IN HEIGHT WHEN PLOTTED AT A SCALE OF 1:400

GEORGE N. BRACKEN  
ONTARIO LAND SURVEYOR



LEGEND:

- DENOTES SURVEY MONUMENT SET
- " SURVEY MONUMENT FOUND
- SIB " STANDARD IRON BAR
- SSIB " SHORT STANDARD IRON BAR
- IB " IRON BAR
- RIB " ROUND IRON BAR
- RPL " ROCK PLUG
- CC " CUT CROSS
- OU " ORIGIN UNKNOWN
- ORP " OBSERVED REFERENCE POINT
- WIT " WITNESS
- M " MEASURED
- S " SET
- (MPS) " MCINTOSH PERRY SURVEYING INC.
- (1054) " GEO. W. BRACKEN, O.L.S.
- (1152) " JOHN E. KIHL, O.L.S.
- (1185) " JOHN F. GOLTZ, O.L.S.
- (1352) " BRIAN W. KERR, O.L.S.
- P1 " PLAN 27R-9015
- P2 " PLAN 27R-4683

SURVEYOR'S CERTIFICATE

- I CERTIFY THAT:
- (1) THIS SURVEY AND PLAN ARE CORRECT AND IN ACCORDANCE WITH THE SURVEYS ACT, THE SURVEYORS ACT AND LAND TITLES ACT, AND THE REGULATIONS MADE UNDER THEM.
  - (2) THE SURVEY WAS COMPLETED ON THE 1<sup>st</sup> DAY OF MAY, 2024

MAY 9, 2024  
DATE

GEORGE N. BRACKEN  
GEORGE N. BRACKEN  
ONTARIO LAND SURVEYOR

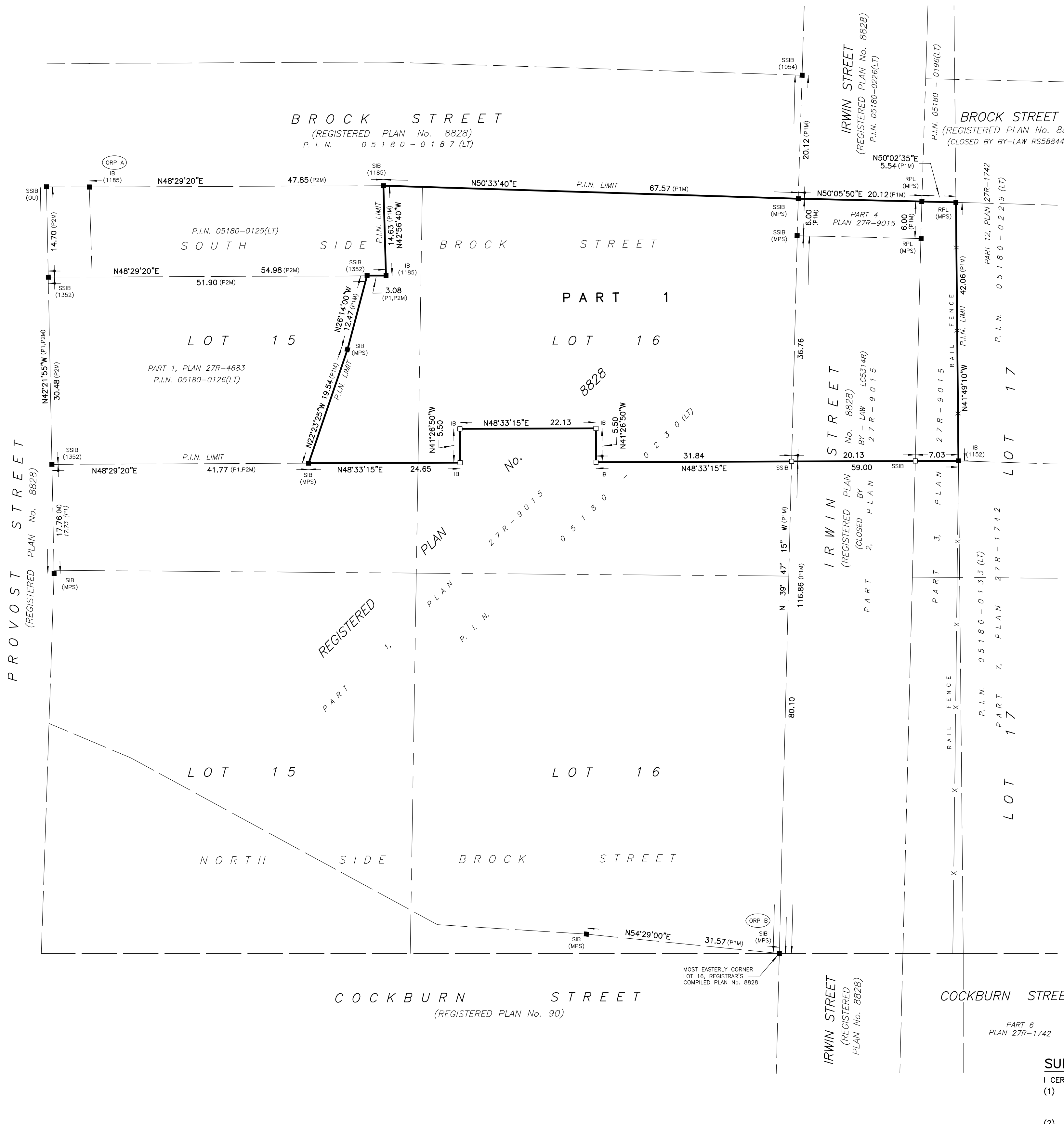
THIS PLAN OF SURVEY RELATES TO AOLS PLAN SUBMISSION FORM NUMBER 2213643.

**Callon + Dietz** INCORPORATED

ONTARIO LAND SURVEYORS  
CARLETON PLACE LONDON NORTH BAY  
requests@callondietz.com callondietz.com

SURVEY BY: CM/JV DRAWN BY: NJ FILE No: 24-2369

REGISTERED  
ISO 9001



INTEGRATION DATA

OBSERVED REFERENCE POINTS (ORP'S) DERIVED FROM REAL TIME NETWORK OBSERVATIONS (RTN) AND ARE REFERRED TO MTM ZONE 9 NAD83 (CSRS)(2010) COORDINATES COMPLY WITH URBAN ACCURACY PER SEC.14 (2) OF O. REG. 216/10

POINT ID	NORTHING	EASTING
ORP A	4973510.35	325621.57
ORP B	4973490.59	325788.23

COORDINATES CANNOT, IN THEMSELVES, BE USED TO RE-ESTABLISH CORNERS OR BOUNDARIES SHOWN ON THIS PLAN

BEARING NOTE

BEARINGS ARE MTM GRID, DERIVED FROM OBSERVED REFERENCE POINTS A & B, BY REAL TIME NETWORK (RTN) OBSERVATIONS, MTM ZONE 9, CENTRAL MERIDIAN 76°30'00"W, NAD83 (CSRS)(2010)

FOR BEARING COMPARISONS, A ROTATION OF 0°19'40" COUNTER CLOCKWISE, WAS APPLIED TO THE BEARINGS ON P1 AND P2

DISTANCES ARE GROUND AND CAN BE CONVERTED TO GRID BY MULTIPLYING BY THE COMBINED SCALE FACTOR OF 0.9998895

METRIC

DISTANCES AND COORDINATES SHOWN ON THIS PLAN ARE IN METRES AND CAN BE CONVERTED TO FEET BY DIVIDING BY 0.3048