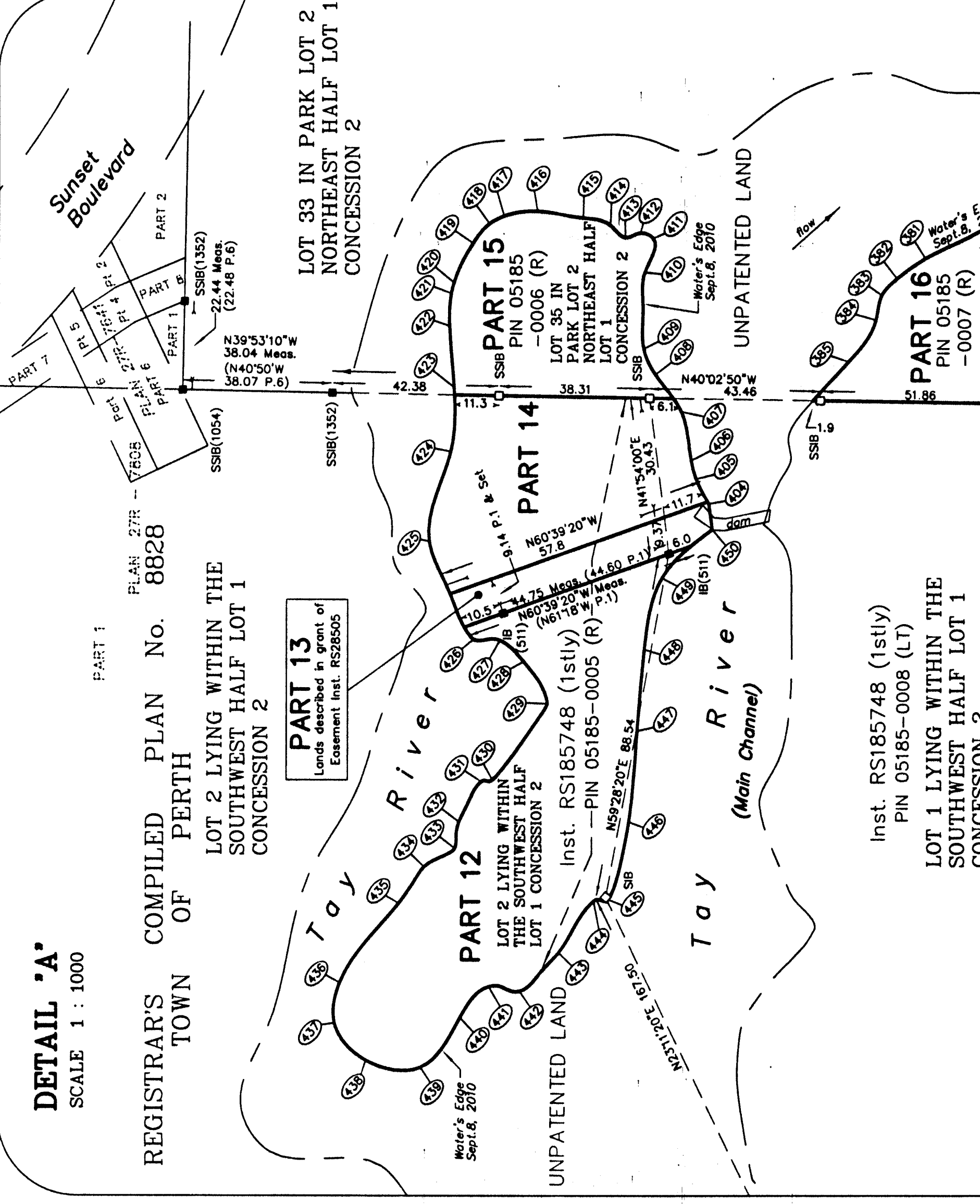
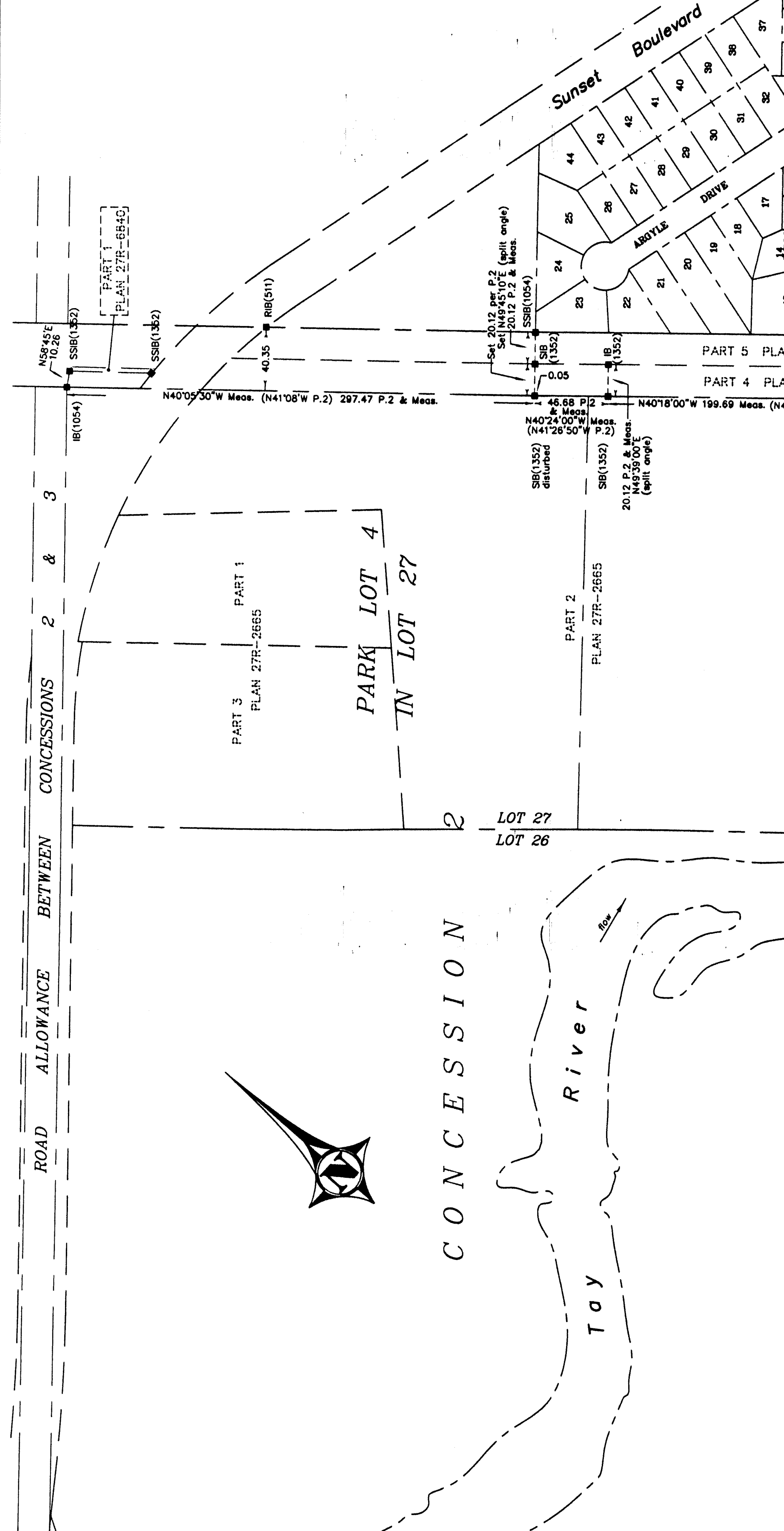


PLAN 27R 10185
 DATE: Dec 13, 2012
 BROWN W. KERR O.L.S.
 REGISTRAR FOR THE TOWNSHIP OF BATHURST AND DRUMMOND
 LAMARK No. 277

SCHEDULE - LAND TITLES

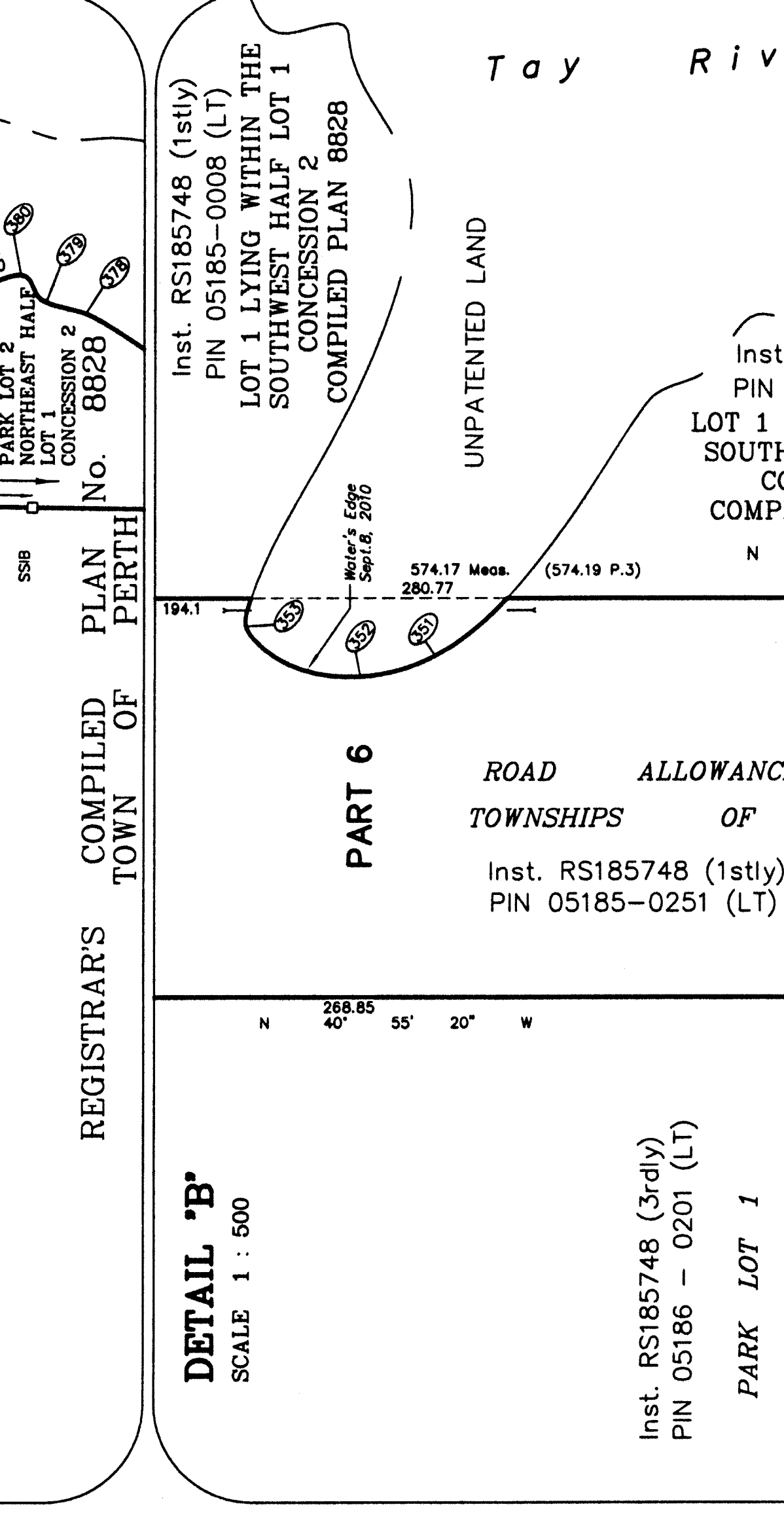
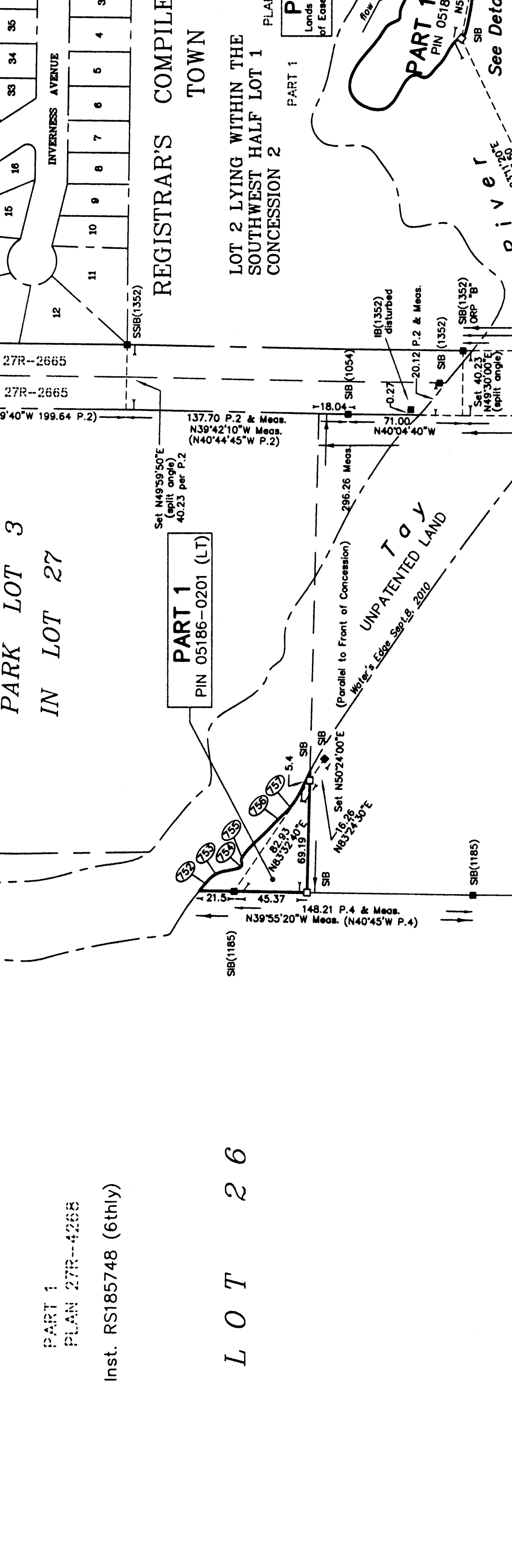
1	PARK LOT 3 IN LOT 27 CONCESSION 2	Part 05185-0001 (LT)	0.30
2	PARK LOT 4 IN LOT 27 CONCESSION 2	Part 05185-0002 (LT)	0.30
3	ROAD ALLOWANCE BETWEEN CONCESSIONS 1 AND 2	Part 05185-0003 (LT)	0.06
4	ROAD ALLOWANCE BETWEEN TOWNSHIPS OF BATHURST AND DRUMMOND	Part 05185-0004 (LT)	0.06
5	ROAD ALLOWANCE BETWEEN CONCESSIONS 1 AND 2	Part 05185-0005 (LT)	0.06
6	ROAD ALLOWANCE BETWEEN TOWNSHIPS OF BATHURST AND DRUMMOND	Part 05185-0006 (LT)	0.06
7	ROAD ALLOWANCE BETWEEN CONCESSIONS 1 AND 2	Part 05185-0007 (LT)	0.06
8	ROAD ALLOWANCE BETWEEN TOWNSHIPS OF BATHURST AND DRUMMOND	Part 05185-0008 (LT)	0.06
9	ROAD ALLOWANCE BETWEEN CONCESSIONS 1 AND 2	Part 05185-0009 (LT)	0.06
10	ROAD ALLOWANCE BETWEEN TOWNSHIPS OF BATHURST AND DRUMMOND	Part 05185-0010 (LT)	0.06
11	ROAD ALLOWANCE BETWEEN CONCESSIONS 1 AND 2	Part 05185-0011 (LT)	0.06
12	ROAD ALLOWANCE BETWEEN TOWNSHIPS OF BATHURST AND DRUMMOND	Part 05185-0012 (LT)	0.06
13	ROAD ALLOWANCE BETWEEN CONCESSIONS 1 AND 2	Part 05185-0013 (LT)	0.06
14	ROAD ALLOWANCE BETWEEN TOWNSHIPS OF BATHURST AND DRUMMOND	Part 05185-0014 (LT)	0.06
15	ROAD ALLOWANCE BETWEEN CONCESSIONS 1 AND 2	Part 05185-0015 (LT)	0.06
16	ROAD ALLOWANCE BETWEEN TOWNSHIPS OF BATHURST AND DRUMMOND	Part 05185-0016 (LT)	0.06
17	ROAD ALLOWANCE BETWEEN CONCESSIONS 1 AND 2	Part 05185-0017 (LT)	0.06
18	ROAD ALLOWANCE BETWEEN TOWNSHIPS OF BATHURST AND DRUMMOND	Part 05185-0018 (LT)	0.06
19	ROAD ALLOWANCE BETWEEN CONCESSIONS 1 AND 2	Part 05185-0019 (LT)	0.06
20	ROAD ALLOWANCE BETWEEN TOWNSHIPS OF BATHURST AND DRUMMOND	Part 05185-0020 (LT)	0.06
21	ROAD ALLOWANCE BETWEEN CONCESSIONS 1 AND 2	Part 05185-0021 (LT)	0.06
22	ROAD ALLOWANCE BETWEEN TOWNSHIPS OF BATHURST AND DRUMMOND	Part 05185-0022 (LT)	0.06
23	ROAD ALLOWANCE BETWEEN CONCESSIONS 1 AND 2	Part 05185-0023 (LT)	0.06
24	ROAD ALLOWANCE BETWEEN TOWNSHIPS OF BATHURST AND DRUMMOND	Part 05185-0024 (LT)	0.06
25	ROAD ALLOWANCE BETWEEN CONCESSIONS 1 AND 2	Part 05185-0025 (LT)	0.06
26	ROAD ALLOWANCE BETWEEN TOWNSHIPS OF BATHURST AND DRUMMOND	Part 05185-0026 (LT)	0.06
27	ROAD ALLOWANCE BETWEEN CONCESSIONS 1 AND 2	Part 05185-0027 (LT)	0.06
28	ROAD ALLOWANCE BETWEEN TOWNSHIPS OF BATHURST AND DRUMMOND	Part 05185-0028 (LT)	0.06
29	ROAD ALLOWANCE BETWEEN CONCESSIONS 1 AND 2	Part 05185-0029 (LT)	0.06
30	ROAD ALLOWANCE BETWEEN TOWNSHIPS OF BATHURST AND DRUMMOND	Part 05185-0030 (LT)	0.06

PLAN OF SURVEY OF PART OF PARK LOT 3 IN LOT 27 CONCESSION 2 AND PART OF THE ROAD ALLOWANCE BETWEEN CONCESSIONS 1 AND 2 ALL IN THE GEOGRAPHIC TOWNSHIP OF BATHURST NOW IN THE TOWN OF PERTH AND PART OF THE ROAD ALLOWANCE BETWEEN TOWNSHIPS OF BATHURST AND DRUMMOND AND PART OF THE ROAD ALLOWANCE BETWEEN CONCESSIONS 1 AND 2 FORMERLY IN THE GEOGRAPHIC TOWNSHIP OF DRUMMOND AND PART OF SOUTHEAST PART LOT 1 CONCESSION 1 AND PART OF LOT 2 LYING WITHIN THE SOUTHWEST HALF LOT 1 CONCESSION 2 AND LOTS 34 AND 35 IN PARK LOT 2 NORTHEAST HALF LOT 1 CONCESSION 2 REGISTRAR'S COMPILED PLAN No. 8828 TOWN OF PERTH COUNTY OF LANARK MCINTOSH PERRY SURVEYING INC.



DETAIL 'B'
 SCALE 1:500

DETAIL 'C'
 SCALE 1:500



TIES TO PREVIOUS EASEMENTS & TO UTM ZONE 18 MGRS CSRS COORDINATES

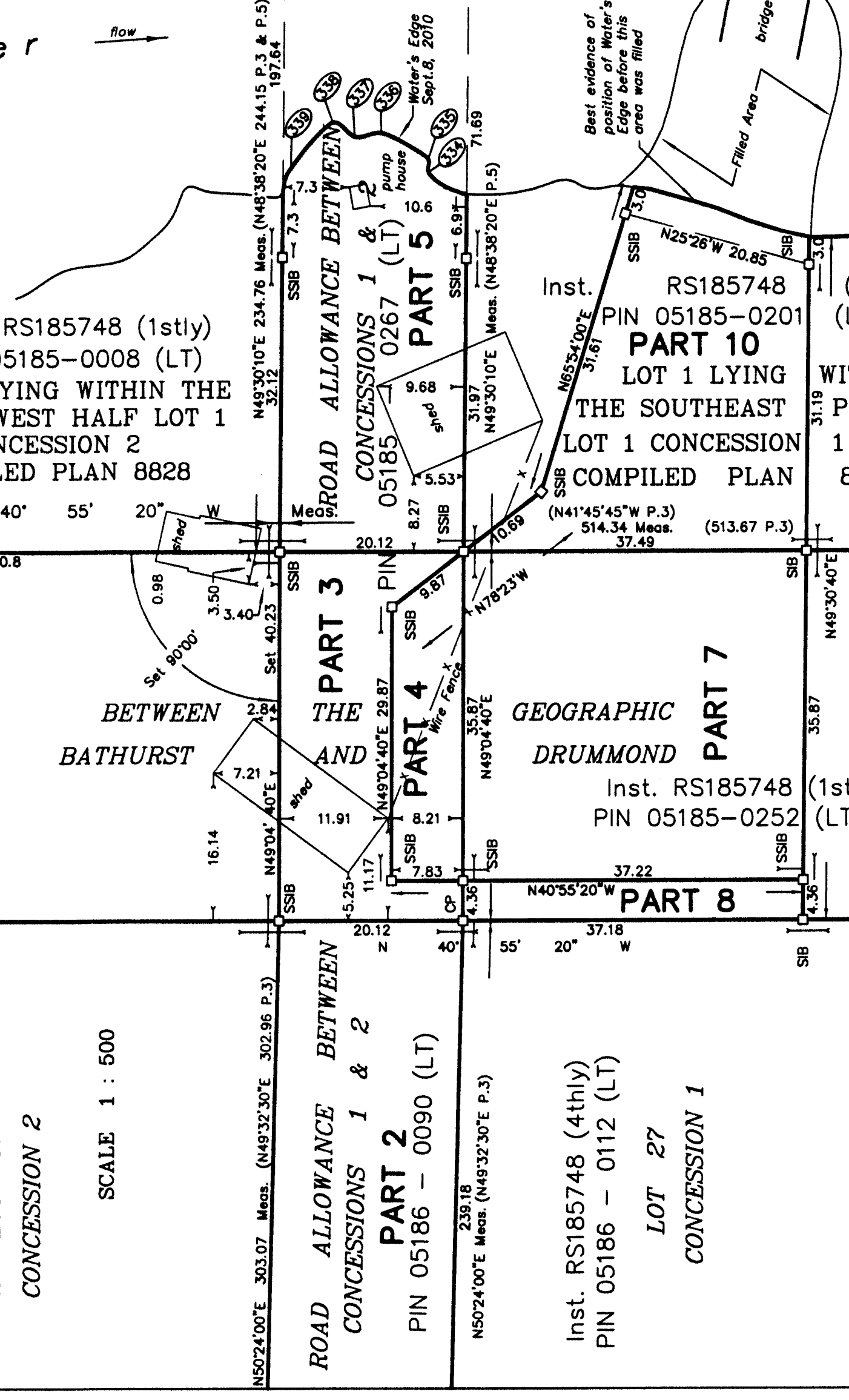
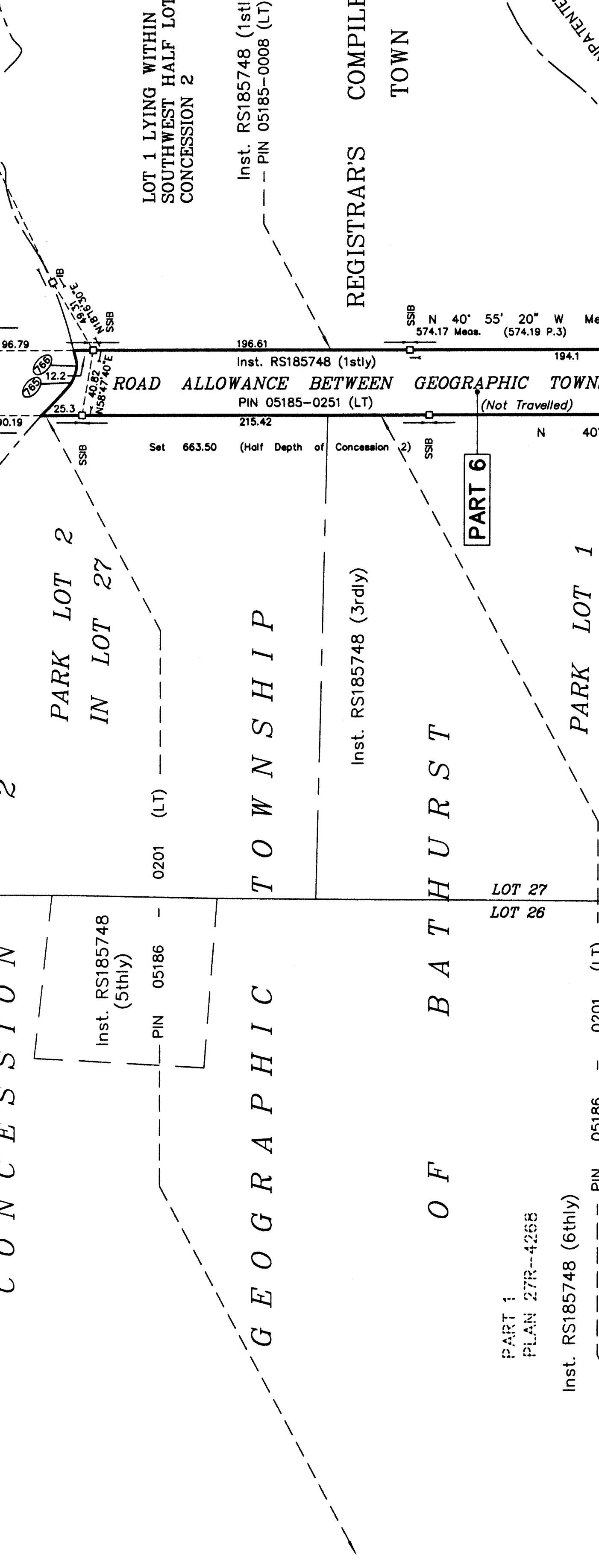
Point	Northings	Easting
1	4972360.0	400000.0
2	4972360.0	400000.0
3	4972360.0	400000.0
4	4972360.0	400000.0
5	4972360.0	400000.0
6	4972360.0	400000.0
7	4972360.0	400000.0
8	4972360.0	400000.0
9	4972360.0	400000.0
10	4972360.0	400000.0
11	4972360.0	400000.0
12	4972360.0	400000.0
13	4972360.0	400000.0
14	4972360.0	400000.0
15	4972360.0	400000.0
16	4972360.0	400000.0
17	4972360.0	400000.0
18	4972360.0	400000.0
19	4972360.0	400000.0
20	4972360.0	400000.0
21	4972360.0	400000.0
22	4972360.0	400000.0
23	4972360.0	400000.0
24	4972360.0	400000.0
25	4972360.0	400000.0
26	4972360.0	400000.0
27	4972360.0	400000.0
28	4972360.0	400000.0
29	4972360.0	400000.0
30	4972360.0	400000.0

SURVEYORS CERTIFICATE

I, the undersigned, being a duly qualified and licensed Surveyor, do hereby certify that the above is a true and correct copy of the original plan as filed in my office, and that the same has been examined and found to be correct.

Dated: Dec 13, 2012

B. W. KERR
 SURVEYOR



LEGEND AND NOTES

MONUMENT PLANTED
 MONUMENT CONTROL
 MONUMENT FOUND
 MONUMENT MISSING
 MONUMENT RELOCATED
 MONUMENT SET
 MONUMENT SET BY
 MONUMENT SET IN
 MONUMENT SET ON
 MONUMENT SET OVER
 MONUMENT SET UNDER
 MONUMENT SET WITHIN
 MONUMENT SET WITHOUT

NOTES:
 1. THIS PLAN IS A COMPILED PLAN AND DOES NOT REPRESENT A SURVEY OF THE LAND.
 2. THE PLAN IS A COMPILED PLAN AND DOES NOT REPRESENT A SURVEY OF THE LAND.
 3. THE PLAN IS A COMPILED PLAN AND DOES NOT REPRESENT A SURVEY OF THE LAND.
 4. THE PLAN IS A COMPILED PLAN AND DOES NOT REPRESENT A SURVEY OF THE LAND.
 5. THE PLAN IS A COMPILED PLAN AND DOES NOT REPRESENT A SURVEY OF THE LAND.
 6. THE PLAN IS A COMPILED PLAN AND DOES NOT REPRESENT A SURVEY OF THE LAND.
 7. THE PLAN IS A COMPILED PLAN AND DOES NOT REPRESENT A SURVEY OF THE LAND.
 8. THE PLAN IS A COMPILED PLAN AND DOES NOT REPRESENT A SURVEY OF THE LAND.
 9. THE PLAN IS A COMPILED PLAN AND DOES NOT REPRESENT A SURVEY OF THE LAND.
 10. THE PLAN IS A COMPILED PLAN AND DOES NOT REPRESENT A SURVEY OF THE LAND.
 11. THE PLAN IS A COMPILED PLAN AND DOES NOT REPRESENT A SURVEY OF THE LAND.
 12. THE PLAN IS A COMPILED PLAN AND DOES NOT REPRESENT A SURVEY OF THE LAND.
 13. THE PLAN IS A COMPILED PLAN AND DOES NOT REPRESENT A SURVEY OF THE LAND.
 14. THE PLAN IS A COMPILED PLAN AND DOES NOT REPRESENT A SURVEY OF THE LAND.
 15. THE PLAN IS A COMPILED PLAN AND DOES NOT REPRESENT A SURVEY OF THE LAND.
 16. THE PLAN IS A COMPILED PLAN AND DOES NOT REPRESENT A SURVEY OF THE LAND.
 17. THE PLAN IS A COMPILED PLAN AND DOES NOT REPRESENT A SURVEY OF THE LAND.
 18. THE PLAN IS A COMPILED PLAN AND DOES NOT REPRESENT A SURVEY OF THE LAND.
 19. THE PLAN IS A COMPILED PLAN AND DOES NOT REPRESENT A SURVEY OF THE LAND.
 20. THE PLAN IS A COMPILED PLAN AND DOES NOT REPRESENT A SURVEY OF THE LAND.
 21. THE PLAN IS A COMPILED PLAN AND DOES NOT REPRESENT A SURVEY OF THE LAND.
 22. THE PLAN IS A COMPILED PLAN AND DOES NOT REPRESENT A SURVEY OF THE LAND.
 23. THE PLAN IS A COMPILED PLAN AND DOES NOT REPRESENT A SURVEY OF THE LAND.
 24. THE PLAN IS A COMPILED PLAN AND DOES NOT REPRESENT A SURVEY OF THE LAND.
 25. THE PLAN IS A COMPILED PLAN AND DOES NOT REPRESENT A SURVEY OF THE LAND.
 26. THE PLAN IS A COMPILED PLAN AND DOES NOT REPRESENT A SURVEY OF THE LAND.
 27. THE PLAN IS A COMPILED PLAN AND DOES NOT REPRESENT A SURVEY OF THE LAND.
 28. THE PLAN IS A COMPILED PLAN AND DOES NOT REPRESENT A SURVEY OF THE LAND.
 29. THE PLAN IS A COMPILED PLAN AND DOES NOT REPRESENT A SURVEY OF THE LAND.
 30. THE PLAN IS A COMPILED PLAN AND DOES NOT REPRESENT A SURVEY OF THE LAND.

