

Distances shown on this plan are ground distances and can be converted to grid distances by multiplying by the combined scale factor of 0.999883.

Bearings are grid, derived from Can-Net 2016 Real Time Network GPS observations on reference points (ORP A and ORP B), shown hereon, having a bearing between them of N86°14'40"E and are referenced to the Central Meridian of MTM Zone 9 ( 76°30' West Longitude ) NAD-83 (CSRS)(2010).

For comparison purposes, a rotation of 0°18'20" counter clockwise was applied to the bearings on P1.

Coordinates are derived from Can-Net 2016 Real Time Network GPS observations and are referred to the Central Meridian of MTM Zone 9 (76°30' West Longitude) NAD-83 (CSRS)(2010).

Coordinate values are to urban accuracy in accordance with O. Reg. 216/10.

. ORP A                      Northing 4974191.42    Easting 324118.73  
. ORP B                      Northing 4974208.52    Easting 324379.31

Caution: Coordinates cannot, in themselves, be used to re-establish corners or boundaries shown on this plan.

**Notes & Legend**

- Denotes Survey Monument Planted
- Denotes Survey Monument Found
- SSIB Short Standard Iron Bar
- IB Iron Bar
- (WIT) Witness
- OU Origin Unknown
- Meas. Measured
- Acc. Accepted
- (P1) Plan by George Bracken dated November 3, 1970
- (P2) Plan 27R-11097

Scale 1 : 400



**Metric**

**DISTANCES AND COORDINATES SHOWN ON THIS PLAN ARE IN METRES AND CAN BE CONVERTED TO FEET BY DIVIDING BY 0.3048.**

**Surveyor's Certificate**

- I CERTIFY THAT :
- This survey and plan are correct and in accordance with the Surveys Act, the Surveyors Act and the Land Titles Act and the regulations made under them.
  - The survey was completed on the 13th day of July, 2023.

Date \_\_\_\_\_  
Emmett Ketchum  
Ontario Land Surveyor

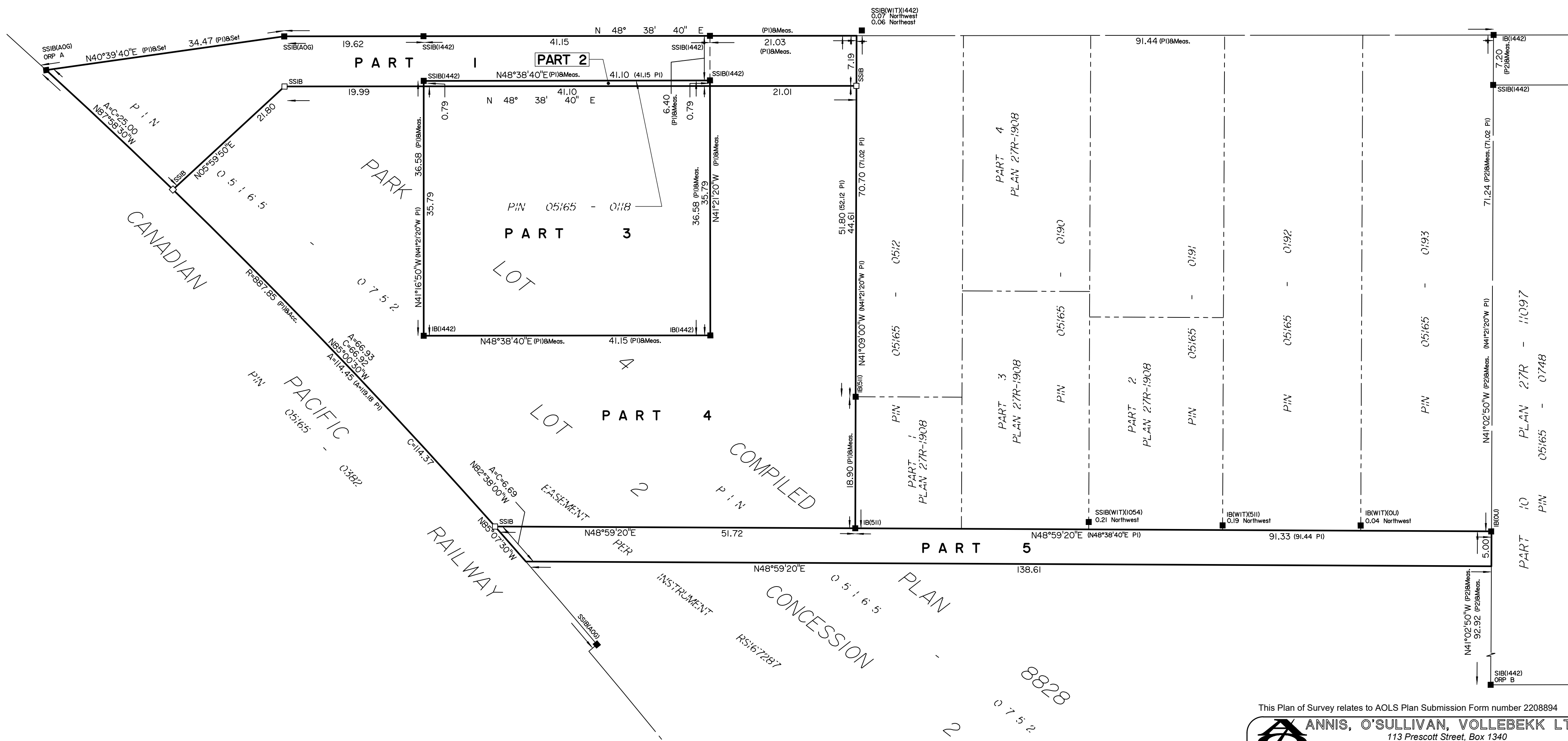
**PLAN OF SURVEY OF  
PART OF PARK LOT 4  
COMPILED PLAN 8828  
LYING WITHIN  
LOT 2  
CONCESSION 2  
GEOGRAPHIC TOWNSHIP OF  
DRUMMOND  
NOW IN THE  
TOWN OF PERTH  
COUNTY OF LANARK**  
Surveyed by Annis, O'Sullivan, Vollebakk Ltd.

**SCHEDULE**

PART	PART OF LOT	CONCESSION	PART OF PIN
1			05165-0752
2			ALL OF
3	2	2	05165-0118
4			
5			05165-0752

Parts 1, 4, and 5: Subject to easement per Instrument RS167287.

HARRIS STREET COMPILED PLAN 8828  
PIN 05165 - 0502



This Plan of Survey relates to AOLS Plan Submission Form number 2208894

**ANNIS, O'SULLIVAN, VOLLEBEKK LTD.**  
113 Prescott Street, Box 1340  
Kemptville, Ontario K0G 1J0  
Phone: (613) 258-1717  
Email: Kemptville@aovltd.com

Ontario  
**Land Surveyors**

Job No. K-13410-23 Lee PHL12C2 DR R D3