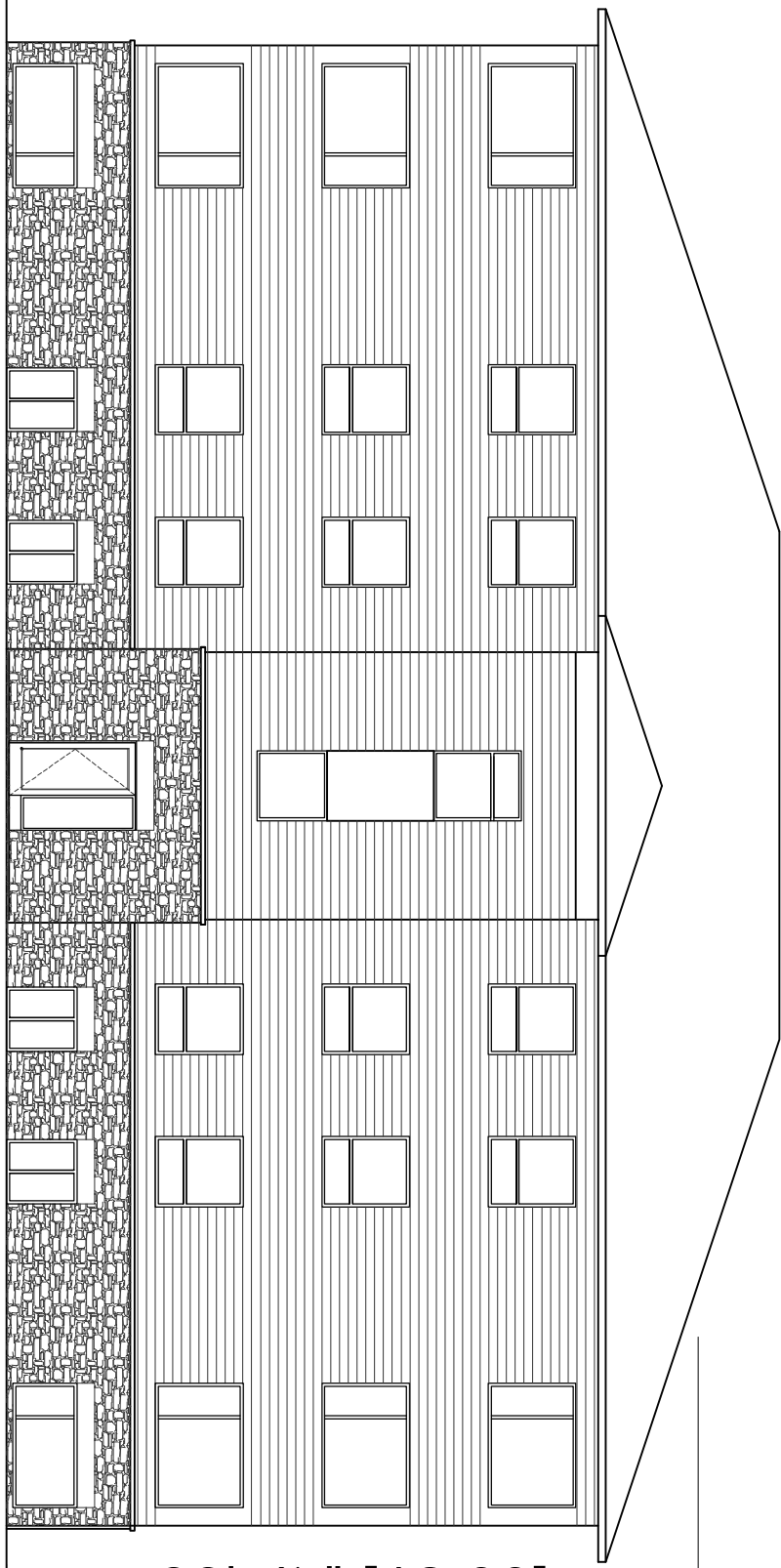


FRONT ELEVATION 16 UNIT APARTMENT BUILDINGS
OFF HARRIS STREET
 PERTH, ON



39'-4 1/2" [12.00]

GRADE

scale / échelle	date
3/32" = 1'-0"	Feb 9, 2022
drawn by / dessiné par	project no. / projet
GH	H2019
checked by / vérifié par	drawing no. / dessin no.
GH	

2.0